

ABOUT BREAST CANCER

Breast cancer is a disease in which malignant (cancer) cells form in the tissues of the breast. Approximately 12.8 percent of women will be diagnosed with female breast cancer at some point during their lifetime. In 2019, an estimated 268,600 new cases of invasive breast cancer were diagnosed. (1)

FINDING BREAST CANCER EARLY SAVES LIVES

- When Breast Cancer is found early, the five-year survival rate is 98%. (1)
- When Breast Cancer is found late, the five-year survival rate drops to 27%. (1)



8751 Park Central Drive, Suite 200
Richmond, VA 23227

www.StageZeroLifeSciences.com

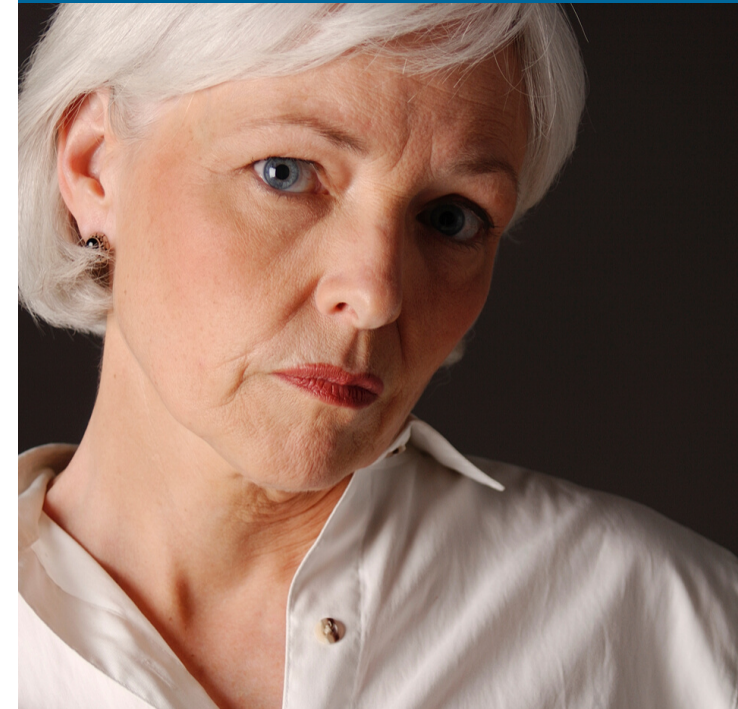
TEL: 855.420.7140

References

1. <https://seer.cancer.gov/statfacts/html/breast.html>
2. <https://www.cancer.gov/types/breast/mammograms-fact-sheet> (Accessed 2020)
3. <https://www.cancer.org/cancer/breast-cancer/about/breast-cancer-signs-and-symptoms.html>
4. Melander O, Belting M, Manjer J, et al. Validation of plasma proneurotensin as a novel biomarker for the prediction of incident breast cancer. *Cancer Epidemiol Biomarkers Prev*. 2014 Aug;23(8):1672-6.
5. Melander O, Orho-Melander M, Manjer J, et al. Stable Peptide of the Endogenous Opioid Enkephalin Precursor and Breast Cancer Risk. *J Clin Oncol*. 2015 Aug 20;33(24):2632-8
6. Dupouy S, Mourra N, Doan VK, et al. The potential use of the neurotensin high affinity receptor 1 as a biomarker for cancer progression and as a component of personalized medicine in selective cancers. *Biochimie* 2011;93:1369-78
7. Melander O, Maisel AS, Almgren P, et al. Plasma proneurotensin and incidence of diabetes, cardiovascular disease, breast cancer, and mortality. *JAMA* 2012;308:1469
8. Dupouy S, Viardot-Foucault V, Alifano M, et al. The Neurotensin Receptor-1 Pathway Contributes to Human Ductal Breast Cancer Progression. *PLoS ONE* 2009; 4(1): e4223. <https://doi.org/10.1371/journal.pone.0004223>
9. Hoff SR, Abrahamsen A-L, Samset JH, et al. Breast Cancer: Missed Interval and Screening-detected Cancer at Full-Field Digital Mammography and Screen-Film Mammography—Results from a Retrospective Review. *Radiology* 2012 264:2, 378-386
10. Gartlehner G, Thaler K, Chapman A, et al. Mammography in combination with breast ultrasonography versus mammography for breast cancer screening in women at average risk. *Cochrane Database of Systematic Reviews* 2013, Issue 4. Art. No.: CD009632. Ho JM, Jafferjee N, Covarrubias GM, et al. Dense breasts: a review of reporting legislation and available supplemental screening options. *AJR Am J Roentgenol*. 203(2):449-56, 2014.
11. Sprague BL, Gangnon RE, Burt V, et al. Prevalence of mammographically dense breasts in the United States. *J Natl Cancer Inst*. 106(10), 2014.
12. Yaghjian L, Colditz GA, Collins LC, et al. Mammographic breast density and subsequent risk of breast cancer in postmenopausal women according to tumor characteristics. *J Natl Cancer Inst*. 103(15):1179-89, 2011.
13. <https://www.cancer.org/cancer/breast-cancer/understanding-a-breast-cancer-diagnosis/breast-cancer-survival-rates.html>. Accessed 2020

TF-2202_r01

Did Know Mammograms Miss 20% of Breast Cancers?



BreastSentry Is a Blood Test that Can Identify Women at Greater Risk for Breast Cancer

BreastSentry measures the levels of two biomarkers which are highly predictive of a woman's risk for developing breast cancer.



ABOUT THE BREASTSENTRY TEST

BreastSentry measures the levels of two biomarkers, proneurotensin (pro-NT) and proenkephalin (pro-ENK), which are highly predictive of a woman's risk for developing breast cancer. Elevated levels of pro-NT and decreased levels of pro-ENK are strong, independent risk factors for the development of breast cancer. (4-8)

BreastSentry provides women with additional information about breast health beyond mammography and empowers women to identify breast cancers early, when they are most treatable.



20% OF BREAST CANCERS ARE MISSED BY MAMMOGRAPHY(2)

IS BREASTSENTRY RIGHT FOR ME?

The BreastSentry test is for any woman age 40 and over who needs further evaluation of breast cancer risk.

50% OF WOMEN HAVE DENSE BREASTS AND CANNOT BENEFIT FROM MAMMOGRAPHY ALONE.(2)

SIGNS AND SYMPTOMS OF BREAST CANCER (3)

Talk to your doctor if you are experiencing any of the following symptoms.

- a lump or mass in your breast
- swelling of all or part of a breast (even if no lump is felt)
- Skin dimpling (sometimes looking like an orange peel)
- Breast or nipple pain
- Nipple retraction (turning inward)
- Nipple or breast skin that is red, dry, flaking or thickened
- Nipple discharge (other than breast milk)
- Swollen lymph nodes



CLINICAL BENEFITS OF THE BREASTSENTRY TEST

- BreastSentry can help you to determine if a female patient should be referred for advanced breast diagnostic procedures.
- Women with elevated BreastSentry scores may need to be referred for advanced imaging tests, such as breast MRI, in addition to a screening mammogram.

VISIT OUR WEBSITE

Learn more about the BreastSentry test by Visiting: www.stagezerolifesciences.com